

Tract B-7
Zoned PCD
1.31 Acres

FOR SALE

LOT B-7,
THE RANCH OFFICE PARK
+/- 1.31 ACRES / 57,064 SQFT

Commercial Pad Site
Retail/ Office Corner
Zoned PCD
Solid growth area
All utilities available



Contact us:

george@P4RealtyGroup.com
www.P4RealtyGroup.com

Cell: 501-224-9600
Office: 501-224-9600

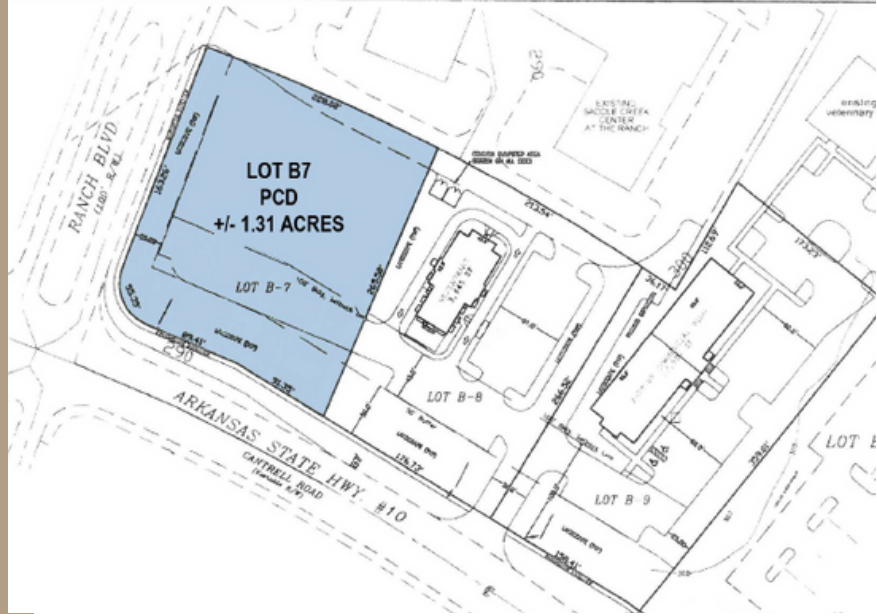
COMMERCIAL PAD SITE - LOT B-7

Ranch Boulevard & Cantrell Rd, Little Rock, AR 72223

Price available upon request



- Close proximity to professional offices.
- Close proximity to K-12 educational opportunities
- Close proximity to multiple shopping opportunities and dining establishments
- Highway 10 visible lot
- Solid growth area
- Zoned POC, all utilities available



PROPOSED SITE LAYOUT LOT B7

0 25 50 100 FEET

SITE SUMMARY

LOT B7 1.31 AC

PROPOSED BUILDING

BUILDING 3,557 SF
PARKING 58 SPACES

	1 MILE	3 MILE	5 MILE
Daytime Pop.	3,071	13,740	39,521
Avg. HH Income	\$168,052	\$167,861	\$143,413
Total HH	1,300	5,448	16,427

Contact us:

george@p4realtygroup.com

cell: 501-413-3664

office: 501-224-9600